

## Product Datasheet

### Glucose Transporter GLUT4/SLC2A4 Antibody (orb196279)

## Description

## Glucose Transporter GLUT4/SLC2A4 Antibody

130KD - 1 2

### Species/Host

Rabbit

### Reactivity

Human, Mouse, Rat

### Conjugation

Unconjugated

### Tested

IHC, WB

### Applications

### Immunogen

E.coli-derived human GLUT4 recombinant protein (Position: N333-D509). Human GLUT4 shares 97% amino acid (aa) sequence identity with mouse GLUT4.

### Form/Appearance

Lyophilized

### Concentration

Adding 0.2 ml of distilled water will yield a concentration of 500 µg/ml.

### Storage

Store at -20°C for one year from date of receipt. After reconstitution, at 4°C for one month. It can also be aliquotted and stored frozen at -20°C for six months. Avoid repeated freeze-thaw cycles.

### Note

For research use only

### Application notes

WB: The detection limit for GLUT4 is approximately 0.25ng/lane under reducing conditions. Tested Species: In-house tested species with positive results. Predicted Species: Species predicted to be fit for the product based on sequence similarities. By Heat: Boiling the paraffin sections in 10mM citrate buffer, pH6.0, for 20mins is required for the staining of formalin/paraffin sections. Other applications have not been tested. Optimal dilutions should be determined by end users. . Add 0.2ml of distilled water will yield a concentration of 500ug/ml.

### Isotype

Rabbit IgG

### Clonality

Polyclonal

### MW

54787 MW

### Uniprot ID

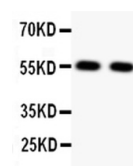
[P14672](#)

### Dilution Range

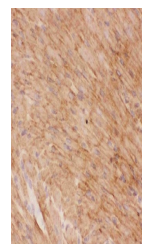
Immunohistochemistry (Frozen Section), 0.5-1µg/ml, Mouse, Rat, -Immunohistochemistry (Paraffin-embedded Section), 0.5-1µg/ml, Human, Mouse, Rat, By HeatWestern blot, 0.1-0.5µg/ml, Rat, Human

### Expiration Date

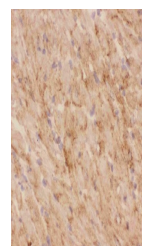
12 months from date of receipt.



WB analysis of GLUT4 using anti-GLUT4 an...



IHC analysis of GLUT4 using anti-GLUT4 a...



IHC analysis of GLUT4 using anti-GLUT4 a...