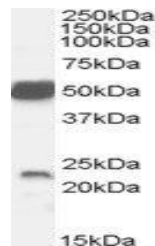


Product Datasheet

Neurturin antibody (orb19602)

Description	Goat polyclonal to Neurturin
Species/Host	Goat
Reactivity	Mouse, Rat
Conjugation	Unconjugated
Tested Applications	ELISA, WB
Target	Neurturin (mouse)
Preservatives	Supplied at 0.5 mg/ml in Tris saline, 0.02% sodium azide, pH 7.3 with 0.5% bovine serum albumin. Aliquot and store at -20°C. Minimize freezing and thawing.
Storage	Aliquot and store at -20°C. Minimize freezing and thawing.
Note	For research use only
Application notes	ELISA: Peptide ELISA: antibody detection limit dilution 1:64000.WB: Approx 22-23kDa band observed in Mouse Brain and Rat Brain lysates (calculated MW of 22.4kDa according to mouse NP_032764.1). Recommended concentration: 0.1-0.3 µg/ml. An additional very strong band of unknown identity was also consistently observed at 50kDa. This band was successfully blocked by incubation with the immunising peptide. We would appreciate any feedback from people in the field - have any such results been reported with other antibodies/lysates Have any further splice variants/modified forms been reported
Protein Sequence	DVHSRYHTLQELSARE
Clonality	Polyclonal
MW	22.4
Dilution Range	ELISA: 1:64000, WB: 0.1-0.3 µg/ml
Expiration Date	12 months from date of receipt.



orb19602
(0.1ug/ml)
staining of
Mouse Br...