

## Product Datasheet

### GABPB2 antibody (orb19533)

## Description

Goat polyclonal antibody to GABPB2

## Species/Host

Goat

## Reactivity

Canine, Human

## Conjugation

Unconjugated

## Tested

ELISA, FC, IF, IHC, WB

## Applications

## Target

GABPB2

## Preservatives

Supplied at 0.5 mg/ml in Tris saline, 0.02% sodium azide, pH 7.3 with 0.5% bovine serum albumin. Aliquot and store at -20°C. Minimize freezing and thawing.

## Storage

Aliquot and store at -20°C. Minimize freezing and thawing.

## Note

For research use only

## Application notes

ELISA: Peptide ELISA: antibody detection limit dilution 1:32000. WB: Approx 45+38kDa bands observed in lysates of cell line HeLa (calculated MW of 42.5kDa according to NP\_005245.2 and of 38.1kDa according to NP\_002032.2). Recommended concentration: 0.5-1.5 µg/ml. An additional band of unknown identity was also consistently observed at 21kDa. This band was successfully blocked by incubation with the immunising peptide. We would appreciate any feedback from people in the field - have any such results been reported with other antibodies/lysates Have any further splice variants/modified forms been reported

## Protein Sequence

SSENSKATDETG

## Clonality

Polyclonal

## MW

42.5; 38.1; 42.4

## Entrez

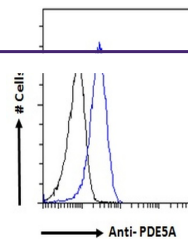
[2553](#)

## Dilution Range

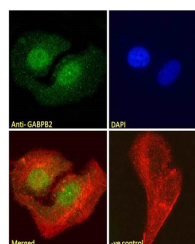
ELISA: 1:32000, WB: 0.3-1 µg/ml, IHC-P: 3.75 µg/ml

## Expiration Date

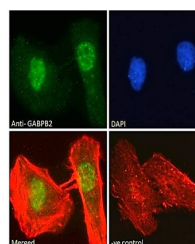
12 months from date of receipt.



orb19533 Flow cytometric analysis of par...



orb19533 Immunofluorescence analysis of ...



orb19533 Immunofluorescence analysis of ...