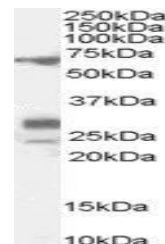


Product Datasheet

Sall4 antibody (orb19503)

Description	Goat polyclonal antibody to Sall4
Species/Host	Goat
Reactivity	Mouse
Conjugation	Unconjugated
Tested Applications	ELISA, WB
Target	Sall4 (mouse)
Preservatives	Supplied at 0.5 mg/ml in Tris saline, 0.02% sodium azide, pH 7.3 with 0.5% bovine serum albumin. Aliquot and store at -20°C. Minimize freezing and thawing.
Storage	Aliquot and store at -20°C. Minimize freezing and thawing.
Note	For research use only
Application notes	ELISA: Peptide ELISA: antibody detection limit dilution 1:32000.WB: Approx 70kDa band observed in Rat Spleen and Testis lysates (calculated MW of 66.2kDa according to NP_958797.2). Recommended concentration: 0.1-0.3 µg/ml. Additional bands of unknown identity was also consistently observed at 28+24kDa. These bands were successfully blocked by incubation with the immunising peptide. We would appreciate any feedback from people in the field - have any such results been reported with other antibodies/lysates Have any further splice variants/modified forms been reported
Protein Sequence	DQSKKGKGKPQN
Clonality	Polyclonal
MW	113; 66.2
Dilution Range	ELISA: 1:32000, WB: 0.1-0.3 µg/ml
Expiration Date	12 months from date of receipt.



orb19503
(0.1ug/ml)
staining of
Rat Test...