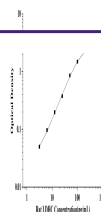


Product Datasheet

Rat LDHC(Lactate Dehydrogenase C) ELISA Kit (orb1949416)

Description

Rat LDHC(Lactate Dehydrogenase C) ELISA



Reactivity

Rat

Range

3.13-200ng/mL

Target

LDHC

Note

For research use only

Application notes

This ELISA kit uses the Sandwich-ELISA principle. The micro ELISA plate provided in this kit has been pre-coated with an antibody specific to Rat LDHC. Standards or samples are added to the micro ELISA plate wells and combined with the specific antibody. Then a biotinylated detection antibody specific for Rat LDHC and Avidin-Horseradish Peroxidase (HRP) conjugate are added successively to each micro plate well and incubated. Free components are washed away. The substrate solution is added to each well. Only those wells that contain Rat LDHC, biotinylated detection antibody and Avidin-HRP conjugate will appear blue in color. The enzyme-substrate reaction is terminated by the addition of stop solution and the color turns yellow. The optical density (OD) is measured spectrophotometrically at a wavelength of $450 \text{ nm} \pm 2 \text{ nm}$. The OD value is proportional to the concentration of Rat LDHC. You can calculate the concentration of Rat LDHC in the samples by comparing the OD of the samples to the standard curve.

Sample Types

serum, plasma, Tissue homogenate and Other biological samples

Uniprot ID

P19629

Sensitivity

1.88 ng/mL

Expiration Date

Please enquire.