

Product Datasheet

Human RCOR3(Rest Corepressor 3) ELISA Kit (orb1949362)

Description

Human RCOR3(Rest Corepressor 3) ELISA Kit

Reactivity

Human

Range

31.25-2000pg/mL

Target

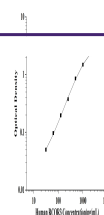
RCOR3

Note

For research use only

Application notes

This ELISA kit uses the Sandwich-ELISA principle. The micro ELISA plate provided in this kit has been pre-coated with an antibody specific to Human RCOR3. Standards or samples are added to the micro ELISA plate wells and combined with the specific antibody. Then a biotinylated detection antibody specific for Human RCOR3 and Avidin-Horseradish Peroxidase (HRP) conjugate are added successively to each micro plate well and incubated. Free components are washed away. The substrate solution is added to each well. Only those wells that contain Human RCOR3, biotinylated detection antibody and Avidin-HRP conjugate will appear blue in color. The enzyme-substrate reaction is terminated by the addition of stop solution and the color turns yellow. The optical density (OD) is measured spectrophotometrically at a wavelength of 450 nm \pm 2 nm. The OD value is proportional to the concentration of Human RCOR3. You can calculate the concentration of Human RCOR3 in the samples by comparing the OD of the samples to the standard curve.



Sample Types

serum, plasma, Tissue homogenate and Other biological samples

Uniprot ID

Q9P2K3

Sensitivity

18.75 pg/mL

Expiration Date

Please enquire.