

## Product Datasheet

**Human CART(Cocaine And Amphetamine  
Regulated Transcript) ELISA Kit [Out of stock]  
(orb1948010)**

## Description

Human CART(Cocaine And

ELISA Kit [Out of stock]

## Reactivity

Human

## Range

31.25-2000pg/mL

## Target

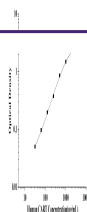
CART

## Note

For research use only

## Application notes

This ELISA kit uses the Sandwich-ELISA principle. The micro ELISA plate provided in this kit has been pre-coated with an antibody specific to Human CART. Standards or samples are added to the micro ELISA plate wells and combined with the specific antibody. Then a biotinylated detection antibody specific for Human CART and Avidin-Horseradish Peroxidase (HRP) conjugate are added successively to each micro plate well and incubated. Free components are washed away. The substrate solution is added to each well. Only those wells that contain Human CART, biotinylated detection antibody and Avidin-HRP conjugate will appear blue in color. The enzyme-substrate reaction is terminated by the addition of stop solution and the color turns yellow. The optical density (OD) is measured spectrophotometrically at a wavelength of 450 nm  $\pm$  2 nm. The OD value is proportional to the concentration of Human CART. You can calculate the concentration of Human CART in the samples by comparing the OD of the samples to the standard curve.



## Sample Types

serum, plasma, Tissue homogenate and Other biological samples

## Uniprot ID

**Q16568**

## Sensitivity

18.75 pg/mL

## Expiration Date

Please enquire.