

Product Datasheet

DKC1 antibody (orb19479)

Description

Goat polyclonal antibody to DKC1

Species/Host

Goat

Reactivity

Human, Mouse

Conjugation

Unconjugated

Tested

ELISA, IHC

Applications
Target

DKC1

Preservatives

Supplied at 0.5 mg/ml in Tris saline, 0.02% sodium azide, pH 7.3 with 0.5% bovine serum albumin. Aliquot and store at -20°C. Minimize freezing and thawing.

Storage

Aliquot and store at -20°C. Minimize freezing and thawing.

Note

For research use only

Application notes

ELISA: Peptide ELISA: antibody detection limit dilution 1:128000.IHC: In paraffin embedded Human Spleen shows strong nuclear staining of select splenocytes. Recommended concentration, 5-10ug/ml.WB: Preliminary experiments gave an approx 70-75kDa band in Human Bone Marrow, Duodenum and Skin lysates after 0.01 µg/ml antibody staining. Please note that currently we cannot find an explanation in the literature for the band we observe given the calculated size of 57.7kDa according to NP_001354.1. The 70-75kDa band was successfully blocked by incubation with the immunizing peptide. We would appreciate any feedback from people in the field - have any results been reported with other antibodies/lysates Have any further splice variants/modified forms been reported

Protein Sequence

KRKRESESEDETPP

Clonality

Polyclonal

MW

57.7

Entrez

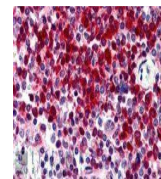
1736

Dilution Range

ELISA: 1:128000, WB: 0.01 µg/ml, IHC-P: 5-10µg/ml

Expiration Date

12 months from date of receipt.



orb19479
(5ug/ml)
staining of
paraffin e...