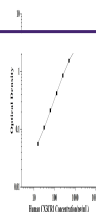


Product Datasheet

Human CX3CR1(Chemokine C-X3-C-Motif Receptor 1) ELISA Kit (orb1947569)

Description

Human CX3CR1(Chemokine C-X3-C-Motif


Reactivity

Human

Range

15.63-1000pg/mL

Target

CX3CR1

Note

For research use only

Application notes

This ELISA kit uses the Sandwich-ELISA principle. The micro ELISA plate provided in this kit has been pre-coated with an antibody specific to Human CX3CR1. Standards or samples are added to the micro ELISA plate wells and combined with the specific antibody. Then a biotinylated detection antibody specific for Human CX3CR1 and Avidin-Horseradish Peroxidase (HRP) conjugate are added successively to each micro plate well and incubated. Free components are washed away. The substrate solution is added to each well. Only those wells that contain Human CX3CR1, biotinylated detection antibody and Avidin-HRP conjugate will appear blue in color. The enzyme-substrate reaction is terminated by the addition of stop solution and the color turns yellow. The optical density (OD) is measured spectrophotometrically at a wavelength of 450 nm \pm 2 nm. The OD value is proportional to the concentration of Human CX3CR1. You can calculate the concentration of Human CX3CR1 in the samples by comparing the OD of the samples to the standard curve.

Sample Types

Cell lysate

Uniprot ID
P49238
Sensitivity

9.38 pg/mL

Expiration Date

Please enquire.