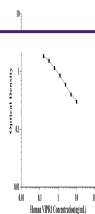


Product Datasheet

Human VIPR1(Vasoactive Intestinal Peptide Receptor 1) ELISA Kit (orb1946818)

Description

Human VIPR1(Vasoactive Intestinal



Reactivity

Human

Range

0.16-10ng/mL

Target

VIPR1

Note

For research use only

Application notes

This ELISA kit uses the Competitive-ELISA principle. The micro ELISA plate provided in this kit has been pre-coated with Human VIPR1. During the reaction, Human VIPR1 in the sample or standard competes with a fixed amount of Human VIPR1 on the solid phase supporter for sites on the Biotinylated Detection Ab specific to Human VIPR1. Excess conjugate and unbound sample or standard are washed away, and Avidin-Horseradish Peroxidase (HRP) conjugate are added to each micro plate well and incubated. Then a TMB substrate solution is added to each well. The enzyme-substrate reaction is terminated by the addition of stop solution and the color turns from blue to yellow. The optical density (OD) is measured spectrophotometrically at a wavelength of 450 nm \pm 2 nm. The concentration of Human VIPR1 in tested samples can be calculated by comparing the OD of the samples to the standard curve.

Sample Types

serum, plasma, Tissue homogenate and Other biological samples

Uniprot ID

[P32241](#)

Sensitivity

0.1 ng/mL

Expiration Date

Please enquire.