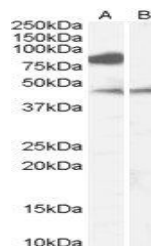


## Product Datasheet

### ZDHHC8 antibody (orb19438)

<b>Description</b>	Goat polyclonal antibody to ZDHHC8
<b>Species/Host</b>	Goat
<b>Reactivity</b>	Canine, Human, Mouse, Porcine, Rat
<b>Conjugation</b>	Unconjugated
<b>Tested Applications</b>	ELISA, WB
<b>Target</b>	ZDHHC8
<b>Preservatives</b>	Supplied at 0.5 mg/ml in Tris saline, 0.02% sodium azide, pH 7.3 with 0.5% bovine serum albumin. Aliquot and store at -20°C. Minimize freezing and thawing.
<b>Storage</b>	Aliquot and store at -20°C. Minimize freezing and thawing.
<b>Note</b>	For research use only
<b>Application notes</b>	ELISA: Peptide ELISA: antibody detection limit dilution 1:16000.WB: Approx 80-85kDa band observed in Human Brain (Frontal Cortex) lysates (calculated MW of 81.4kDa according to NP_037505.1). Recommended concentration: 1-3 µg/ml. An additional band of 48kDa was consistently observed, however this band was not blocked by the immunizing peptide and it is therefore a non-specific signal. We call for caution when used for other assays than Western blot.
<b>Protein Sequence</b>	QRDHPQLKTPPSK
<b>Clonality</b>	Polyclonal
<b>MW</b>	81.4
<b>Entrez</b>	<b>29801</b>
<b>Dilution Range</b>	ELISA: 1:16000, WB: 1-3 µg/ml
<b>Expiration Date</b>	12 months from date of receipt.



orb19438  
(0.1ug/ml)  
staining of  
Human Br...