

Product Datasheet

ABHD5 antibody (orb19437)

Description

Goat polyclonal antibody to ABHD5

Species/Host

Goat

Reactivity

Canine, Human, Mouse, Rat

Conjugation

Unconjugated

Tested

ELISA, IF, IHC, WB

Applications

Target

CGI58 / ABHD5

Preservatives

Supplied at 0.5 mg/ml in Tris saline, 0.02% sodium azide, pH 7.3 with 0.5% bovine serum albumin. Aliquot and store at -20°C. Minimize freezing and thawing.

Storage

Aliquot and store at -20°C. Minimize freezing and thawing.

Note

For research use only

Application notes

ELISA: Peptide ELISA: antibody detection limit dilution 1:16000. WB: Approx 40kDa band observed in lysates of cell lines NIH3T3 and A431 (calculated MW of 39.1kDa according to NP_057090.2). Recommended concentration: 0.2-0.6 µg/ml. Additional faint bands of 26kDa and 18kDa were observed. These bands were successfully blocked by incubation with the immunizing peptide. We would appreciate any feedback from people in the field - have any such results been reported with other antibodies/lysates Have any further splice variants/modified forms been reported

Protein Sequence

FPERPDLADQDR

Clonality

Polyclonal

MW

39.1

Entrez

51099

Dilution Range

ELISA: 1:16000, WB: 0.2-0.6 µg/ml, IHC-P: 3.75 µg/ml

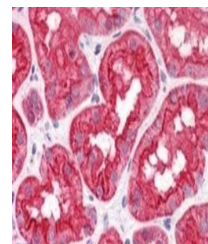
Expiration Date

12 months from date of receipt.

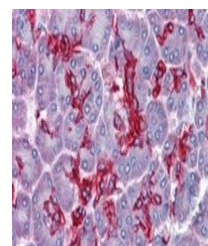
250kDa
150kDa
100kDa

50kDa
37kDa
25kDa
20kDa
15kDa

Western blot analysis of NIH3T3 lysate us...



Immunohistochemical staining of Human Ki...



Immunohistochemical staining of Human Pa...