

Product Datasheet

P4HA1 antibody (orb19434)

Description

Goat polyclonal antibody to P4HA1

Species/Host

Goat

Reactivity

Bovine, Canine, Human

Conjugation

Unconjugated

Tested

ELISA, IF, IHC

Applications

Target

P4HA1

Preservatives

Supplied at 0.5 mg/ml in Tris saline, 0.02% sodium azide, pH 7.3 with 0.5% bovine serum albumin. Aliquot and store at -20°C. Minimize freezing and thawing.

Storage

Aliquot and store at -20°C. Minimize freezing and thawing.

Note

For research use only

Application notes

ELISA: Peptide ELISA: antibody detection limit dilution 1:32000. WB: Approx 60kDa band observed in lysates of cell lines HEK293, A431 and NIH3T3 (calculated MW of 61.0kDa according to NP_000908.2 and NP_001017962.1). Recommended concentration: 0.1-0.1 µg/ml. An additional band of unknown identity was also consistently observed at 48kDa. This band was successfully blocked by incubation with the immunising peptide. We would appreciate any feedback from people in the field - have any such results been reported with other antibodies/lysates Have any further splice variants/modified forms been reported

Protein Sequence

DFARKDEPDAFKE

Clonality

Polyclonal

MW

61.0, 61.0

Entrez

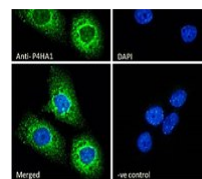
5033

Dilution Range

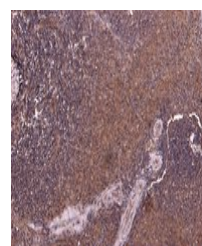
ELISA: 1:128000, IF/ICC: 10µg/ml

Expiration Date

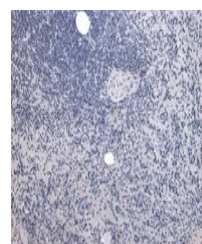
12 months from date of receipt.



Immunofluorescence analysis of A431 cell...



Immunohistochemical staining of Human Sp...



Immunohistochemical staining of Human Sp...