

Product Datasheet

UBASH3A antibody (orb19426)

Description

Goat polyclonal antibody to UBASH3A

Species/Host

Goat

Reactivity

Canine, Human

Conjugation

Unconjugated

Tested

ELISA, IHC

Applications
Target

STS2 / TULA (internal)

Preservatives

Supplied at 0.5 mg/ml in Tris saline, 0.02% sodium azide, pH 7.3 with 0.5% bovine serum albumin. Aliquot and store at -20°C. Minimize freezing and thawing.

Storage

Aliquot and store at -20°C. Minimize freezing and thawing.

Note

For research use only

Application notes

ELISA: Peptide ELISA: antibody detection limit dilution 1:64000. IHC: In paraffin embedded Human Spleen shows cytoplasm staining of T-cells eccentrically gathered around an artery. Recommended concentration, 2.5ug/ml. WB: Preliminary experiments gave an approx 48kDa band in lysates of B-cell line Daudi after 0.1 µg/ml antibody staining. Please note that currently we cannot find an explanation in the literature for the band we observe given the calculated size of 74.1kDa according to NP_061834.1 and 69.8kDa according to NP_001001895.1. The 48kDa band was successfully blocked by incubation with the immunizing peptide. We would appreciate any feedback from people in the field - have any results been reported with other antibodies/lysates Have any further splice variants/modified forms been reported

Protein Sequence

QQCSTPDGKYRPPD

Clonality

Polyclonal

MW

74.1; 69.8

Entrez

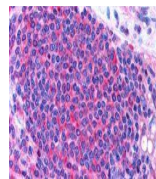
53347

Dilution Range

ELISA: 1:64000, WB: 0.1 µg/ml, IHC-P: 2.5 µg/ml

Expiration Date

12 months from date of receipt.



orb19426
(2.5ug/ml)
staining of
paraffin...