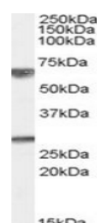


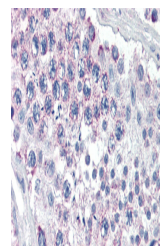
Product Datasheet

GPSM2 antibody (orb19420)

Description	Goat polyclonal antibody to GPSM2
Species/Host	Goat
Reactivity	Canine, Human
Conjugation	Unconjugated
Tested Applications	ELISA, IF, IHC
Target	GPSM2
Preservatives	Supplied at 0.5 mg/ml in Tris saline, 0.02% sodium azide, pH 7.3 with 0.5% bovine serum albumin. Aliquot and store at -20°C. Minimize freezing and thawing.
Storage	Aliquot and store at -20°C. Minimize freezing and thawing.
Note	For research use only
Application notes	ELISA: Peptide ELISA: antibody detection limit dilution 1:64000.WB: Approx 70kDa band observed in Human Brain (Cerebellum) and Human Liver lysates (calculated MW of 75.8kDa according to NP_037428.2). Recommended concentration: 0.01-0.03 µg/ml. An additional band of unknown identity was also consistently observed at 26-28kDa. This band was successfully blocked by incubation with the immunising peptide. We would appreciate any feedback from people in the field - have any such results been reported with other antibodies/lysates Have any further splice variants/modified forms been reported
Protein Sequence	NRLKGKKYKTNSTK
Clonality	Polyclonal
MW	75.8
Entrez	29899
Dilution Range	ELISA: 1:64000, WB: 0.01-0.03 µg/ml, IHC-P: 5 µg/ml
Expiration Date	12 months from date of receipt.



orb19420
(0.01µg/ml)
staining of
Human ...



orb19420
(5µg/ml)
staining of
paraffin ...