

Product Datasheet

APOM antibody (orb19417)

Description

Goat polyclonal antibody to APOM

Species/Host

Goat

Reactivity

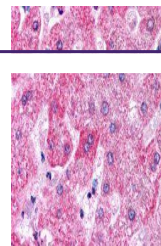
Canine, Human

Conjugation

Unconjugated

Tested

ELISA, IHC

Applications


orb19417
(5ug/ml)
staining of
paraffin e...

Target

APOM

Preservatives

Supplied at 0.5 mg/ml in Tris saline, 0.02% sodium azide, pH 7.3 with 0.5% bovine serum albumin. Aliquot and store at -20°C. Minimize freezing and thawing.

Storage

Aliquot and store at -20°C. Minimize freezing and thawing.

Note

For research use only

Application notes

ELISA: Peptide ELISA: antibody detection limit dilution 1:8000.IHC: In paraffin embedded Human Liver shows strong stain of cytoplasm in select hepatocytes. Recommended concentration, 3-6ug/ml.WB: Preliminary experiments gave an approx 50kDa band in Human Kidney and Liver lysates after 0.2 µg/ml antibody staining. Please note that currently we cannot find an explanation in the literature for the band we observe given the calculated size of 21.3kDa according to NP_061974.2. We do note that ApoM is a glycoprotein which makes a higher size band to be expected. The 50kDa band was successfully blocked by incubation with the immunizing peptide. We would appreciate any feedback from people in the field - have any results been reported with other antibodies/lysates Have any further splice variants/modified forms been reported

Protein Sequence

PRNQEACELSNN

Clonality

Polyclonal

MW

21.3

Entrez

55937

Dilution Range

ELISA: 1:8000, WB: 0.2 µg/ml, IHC-P: 3-6µg/ml

Expiration Date

12 months from date of receipt.