

## Product Datasheet

### NCDN antibody (orb19396)

## Description

Goat polyclonal antibody to NCDN

## Species/Host

Goat

## Reactivity

Bovine, Canine, Human, Mouse, Rat

## Conjugation

Unconjugated

## Tested

ELISA, WB

## Applications

## Target

Neurochondrin

## Preservatives

Supplied at 0.5 mg/ml in Tris saline, 0.02% sodium azide, pH 7.3 with 0.5% bovine serum albumin. Aliquot and store at -20°C. Minimize freezing and thawing.

## Storage

Aliquot and store at -20°C. Minimize freezing and thawing.

## Note

For research use only

## Application notes

ELISA: Peptide ELISA: antibody detection limit dilution 1:16000. WB: Preliminary experiments gave bands at approx 100kDa and 140kDa in Human Brain (Cerebellum) lysates after 1 µg/ml antibody staining. Please note that currently we cannot find an explanation in the literature for the bands we observe given the calculated size of 78.9kDa according to NP\_055099.1 and 77.2kDa according to NP\_001014841.1. Both detected bands were successfully blocked by incubation with the immunizing peptide (and BLAST results with the immunizing peptide sequence did not identify any other proteins to explain the additional bands). We would appreciate any feedback from people in the field - have any results been reported with other antibodies/lysates Have any further splice variants/modified forms been reported

## Protein Sequence

HYLLQVGSEKQKEP

## Clonality

Polyclonal

## MW

78.9; 77.2

## Entrez

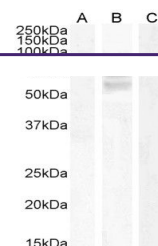
[23154](#)

## Dilution Range

ELISA: 1:16000, WB: 0.3-1 µg/ml

## Expiration Date

12 months from date of receipt.



WB analysis of HepG2 (A), U251 cell lysa...