

Product Datasheet

HAP1 antibody (orb19376)

Description

Goat polyclonal antibody to HAP1

Species/Host

Goat

Reactivity

Human

Conjugation

Unconjugated

Tested

ELISA, IHC, WB

Applications
Target

HAP1

Preservatives

Supplied at 0.5 mg/ml in Tris saline, 0.02% sodium azide, pH 7.3 with 0.5% bovine serum albumin. Aliquot and store at -20°C. Minimize freezing and thawing.

Storage

Aliquot and store at -20°C. Minimize freezing and thawing.

Note

For research use only

Application notes

ELISA: Peptide ELISA: antibody detection limit dilution 1:32000. WB: Approx 70kDa band observed in Human Brain (Frontal Cortex and Hippocampus) lysates (calculated MW of 69.6kDa according to NP_817084.1). Recommended concentration: 0.1-0.3 µg/ml. An additional band of unknown identity was also consistently observed at 25kDa. This band was successfully blocked by incubation with the immunising peptide. We would appreciate any feedback from people in the field - have any such results been reported with other antibodies/lysates Have any further splice variants/modified forms been reported

Protein Sequence

RYDFRYSEDREQ

Clonality

Polyclonal

MW

75.5; 69.6

Entrez

9001

Dilution Range

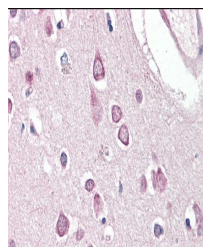
ELISA: 1:32000, WB: 0.1-0.3 µg/ml, IHC-P: 3.75 µg/ml

Expiration Date

12 months from date of receipt.




orb19376 (0.1ug/ml)
staining of Human
Br...



Immunohistochemical
staining of Human
Co...