

Product Datasheet

LPIN3 antibody (orb19353)

Description

Goat polyclonal antibody to LPIN3

Species/Host

Goat

Reactivity

Human

Conjugation

Unconjugated

Tested

ELISA, IHC

Applications
Target

Lipin 3

Preservatives

Supplied at 0.5 mg/ml in Tris saline, 0.02% sodium azide, pH 7.3 with 0.5% bovine serum albumin. Aliquot and store at -20°C. Minimize freezing and thawing.

Storage

Aliquot and store at -20°C. Minimize freezing and thawing.

Note

For research use only

Application notes

ELISA: Peptide ELISA: antibody detection limit dilution 1:64000.IHC: In paraffin embedded Human Thyroid Gland shows staining of cytoplasm and cell membrane of epithelial cells surrounding the follicles. Recommended concentration, 2-3ug/ml.WB: Preliminary experiments gave bands at approx 80kDa and 60kDa in Human Liver lysates after 0.1 µg/ml antibody staining. Please note that currently we cannot find an explanation in the literature for the bands we observe given the calculated size of 93.6kDa according to NP_075047.1. Both detected bands were successfully blocked by incubation with the immunizing peptide (and BLAST results with the immunizing peptide sequence did not identify any other proteins to explain the bands). We would appreciate any feedback from people in the field - have any results been reported with other antibodies/lysates Have any further splice variants/modified forms been reported

Protein Sequence

KPKQKEDAVATD

Clonality

Polyclonal

MW

93.6

Entrez

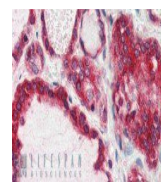
64900

Dilution Range

ELISA: 1:64000, WB: 0.1 µg/ml, IHC-P: 2-3µg/ml

Expiration Date

12 months from date of receipt.



orb19353
(2.5ug/ml)
staining of
paraffin...