

Product Datasheet

Robo1 antibody (orb19340)

Description

Goat polyclonal antibody to Robo1

Species/Host

Goat

Reactivity

Canine, Mouse, Rat

Conjugation

Unconjugated

Tested

ELISA, IHC, WB

Applications

Target

Robo1 / DUTT1 (mouse)

Preservatives

Supplied at 0.5 mg/ml in Tris saline, 0.02% sodium azide, pH 7.3 with 0.5% bovine serum albumin. Aliquot and store at -20°C. Minimize freezing and thawing.

Storage

Aliquot and store at -20°C. Minimize freezing and thawing.

Note

For research use only

Application notes

ELISA: Peptide ELISA: antibody detection limit dilution 1:128000.WB: Preliminary experiments gave bands at approx 80kDa and 40kDa in lysates of Mouse Brain and Rat Brain after 0.03 µg/ml antibody staining. Please note that currently we cannot find an explanation in the literature for the bands we observe given the calculated size of 176kDa according to NP_062286.1. Both detected bands were successfully blocked by incubation with the immunizing peptide (and BLAST results with the immunizing peptide sequence did not identify any other proteins to explain the additional bands). We would appreciate any feedback from people in the field - have any results been reported with other antibodies/lysates Have any further splice variants/modified forms been reported

Protein Sequence

QKARPAKKQKHQ

Clonality

Polyclonal

MW

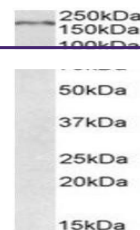
176

Dilution Range

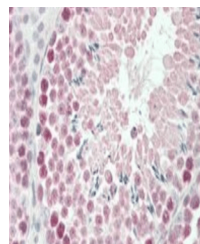
ELISA: 1:128000, WB: 0.05-0.2 µg/ml, IHC-P: 5 µg/ml

Expiration Date

12 months from date of receipt.



Western blot analysis of Mouse Brain lys...



Immunohistochemical staining of Mouse Te...