

Product Datasheet

CYP26B1 antibody (orb19329)

Description

Goat polyclonal antibody to CYP26B1

Species/Host

Goat

Reactivity

Canine, Human, Mouse, Rat

Conjugation

Unconjugated

Tested

ELISA, FC, IHC

Applications

Target

CYP26B1

Preservatives

Supplied at 0.5 mg/ml in Tris saline, 0.02% sodium azide, pH 7.3 with 0.5% bovine serum albumin. Aliquot and store at -20°C. Minimize freezing and thawing.

Storage

Aliquot and store at -20°C. Minimize freezing and thawing.

Note

For research use only

Application notes

ELISA: Peptide ELISA: antibody detection limit dilution 1:128000.WB: Preliminary experiments gave an approx 85kDa band in human testis lysates after 0.1 µg/ml antibody staining. Please note that currently we cannot find an explanation in the literature for the band we observe given the calculated size of 57.5kDa according to NP_063938.1. The 85kDa band was successfully blocked by incubation with the immunizing peptide. We would appreciate any feedback from people in the field - have any results been reported with other antibodies/lysates Have any further splice variants/modified forms been reported

Protein Sequence

SQARSEDKDGRFH

Clonality

Polyclonal

MW

57.5; 49.0

Entrez

56603

Dilution Range

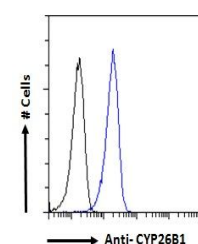
ELISA: 1:128000, IHC-P: 3.75 µg/ml

Expiration Date

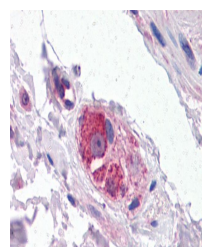
12 months from date of receipt.



Immunohistochemical staining of Human Cells



Flow cytometric analysis of A431 cells



Immunohistochemical staining of Human Smooth Muscle Cells