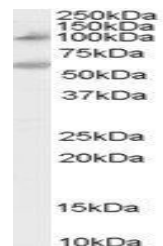


Product Datasheet

CARD15 antibody (orb19326)

Description	Goat polyclonal antibody to CARD15
Species/Host	Goat
Reactivity	Human, Mouse, Rat
Conjugation	Unconjugated
Tested Applications	ELISA, WB
Target	CARD15 / NOD2 (Internal)
Preservatives	Supplied at 0.5 mg/ml in Tris saline, 0.02% sodium azide, pH 7.3 with 0.5% bovine serum albumin. Aliquot and store at -20°C. Minimize freezing and thawing.
Storage	Aliquot and store at -20°C. Minimize freezing and thawing.
Note	For research use only
Application notes	ELISA: Peptide ELISA: antibody detection limit dilution 1:64000.WB: Approx 100kDa band observed in lysates of Human Peripheral Blood Mononucleocytes (calculated MW of 115kDa according to NP_071445.1). Recommended concentration: 0.1-0.3 µg/ml. An additional band of unknown identity was also consistently observed at 60kDa. This band was successfully blocked by incubation with the immunising peptide. We would appreciate any feedback from people in the field - have any results been reported with other antibodies/lysates Have any further splice variants/modified forms been reported
Protein Sequence	KFRFTDRERHCSPTD
Clonality	Polyclonal
MW	115
Entrez	64127
Dilution Range	ELISA: 1:64000, WB: 0.1-0.3 µg/ml
Expiration Date	12 months from date of receipt.



orb19326
(0.1µg/ml)
staining of
Human Pe...