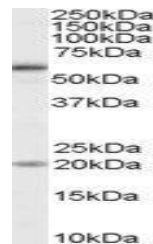


Product Datasheet

BMPR1A antibody (orb19286)

Description	Goat polyclonal antibody to BMPR1A
Species/Host	Goat
Reactivity	Canine, Human
Conjugation	Unconjugated
Tested Applications	ELISA, WB
Target	BMPR1A
Preservatives	Supplied at 0.5 mg/ml in Tris saline, 0.02% sodium azide, pH 7.3 with 0.5% bovine serum albumin. Aliquot and store at -20°C. Minimize freezing and thawing.
Storage	Aliquot and store at -20°C. Minimize freezing and thawing.
Note	For research use only
Application notes	ELISA: Peptide ELISA: antibody detection limit dilution 1:16000.WB: Approx 60kDa band observed in lysates of cell lines HeLa and HepG2 (calculated MW of 60.2kDa according to NP_004320.2). Recommended concentration: 1-3 µg/ml. An additional band of 20kDa was consistently observed, however this band was not blocked by the immunizing peptide and it is therefore a non-specific signal. We call for caution when used for other assays than Western blot.
Protein Sequence	KSDSDQKKSEN
Clonality	Polyclonal
MW	60.2
Entrez	657
Dilution Range	ELISA: 1:16000, WB: 1-3 µg/ml
Expiration Date	12 months from date of receipt.



orb19286
(1µg/ml)
staining of
HeLa cell ...