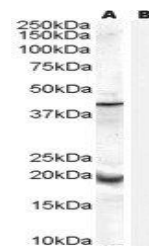


Product Datasheet

GPX7 antibody (orb19266)

Description	Goat polyclonal antibody to GPX7
Species/Host	Goat
Reactivity	Human
Conjugation	Unconjugated
Tested Applications	ELISA, WB
Target	GPX7
Preservatives	Supplied at 0.5 mg/ml in Tris saline, 0.02% sodium azide, pH 7.3 with 0.5% bovine serum albumin. Aliquot and store at -20°C. Minimize freezing and thawing.
Storage	Aliquot and store at -20°C. Minimize freezing and thawing.
Note	For research use only
Application notes	ELISA: Peptide ELISA: antibody detection limit dilution 1:32000.WB: Approx 20kDa band observed in Human Prostate lysates (calculated MW of 21.0kDa according to NP_056511.2). Recommended concentration: 0.3-1 µg/ml. An additional band of unknown identity was also consistently observed at 40kDa. This band was successfully blocked by incubation with the immunising peptide. We would appreciate any feedback from people in the field - have any results been reported with other antibodies/lysates Have any further splice variants/modified forms been reported
Protein Sequence	CNQFGQQEPDSNK
Clonality	Polyclonal
MW	21
Entrez	2882
Dilution Range	ELISA: 1:32000, WB: 0.3-1 µg/ml
Expiration Date	12 months from date of receipt.



Western blot analysis of Human Prostate ...