

Product Datasheet

NCAM2 antibody (orb19241)

Description

Goat polyclonal antibody to NCAM2

Species/Host

Goat

Reactivity

Bovine, Canine, Human, Mouse, Rat

Conjugation

Unconjugated

Tested

ELISA, IHC, WB

Applications
Target

NCAM2 / OCAM

Preservatives

Supplied at 0.5 mg/ml in Tris saline, 0.02% sodium azide, pH 7.3 with 0.5% bovine serum albumin. Aliquot and store at -20°C. Minimize freezing and thawing.

Storage

Aliquot and store at -20°C. Minimize freezing and thawing.

Note

For research use only

Application notes

ELISA: Peptide ELISA: antibody detection limit dilution 1:4000. WB: Preliminary experiments gave an approx 150 and 28kDa bands in Human and Mouse Brain lysates after 0.1 µg/ml antibody staining. Please note that currently we cannot find an explanation in the literature for the band we observe given the calculated size of 93.0kDa according to NP_004531.2. Both observed bands were successfully blocked by incubation with the immunizing peptide. We would appreciate any feedback from people in the field - have any results been reported with other antibodies/lysates Have any further splice variants/modified forms been reported

Protein Sequence

KVSNDIIQSKEDDSK

Clonality

Polyclonal

MW

93

Entrez

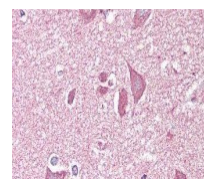
4685

Dilution Range

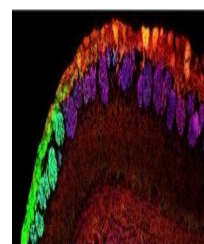
ELISA: 1:4000, WB: 0.1 µg/ml, IHC-P: 3.75ug/ml

Expiration Date

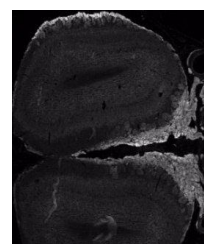
12 months from date of receipt.



Immunohistochemical staining of Human Co...



Immunohistochemical staining of Mouse Ol...



Immunohistochemical staining of Mouse Ol...