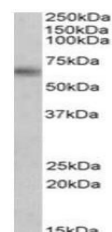


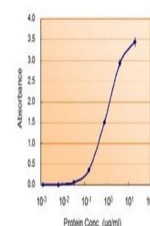
## Product Datasheet

### MAOB antibody (orb19200)

<b>Description</b>	Goat polyclonal to MAOB
<b>Species/Host</b>	Goat
<b>Reactivity</b>	Bovine, Canine, Human, Mouse, Porcine, Rat
<b>Conjugation</b>	Unconjugated
<b>Tested Applications</b>	ELISA, FC, IF, WB
<b>Target</b>	MAOB
<b>Preservatives</b>	Supplied at 0.5 mg/ml in Tris saline, 0.02% sodium azide, pH 7.3 with 0.5% bovine serum albumin. Aliquot and store at -20°C. Minimize freezing and thawing.
<b>Storage</b>	Aliquot and store at -20°C. Minimize freezing and thawing.
<b>Note</b>	For research use only
<b>Application notes</b>	ELISA: Peptide ELISA: antibody detection limit dilution 1:32000.WB: Approx 60kDa band observed in Human Brain lysates (calculated MW of 58.8kDa according to NP_000889.3). Recommended concentration: 1-3 µg/ml. An additional band of unknown identity was also consistently observed at 150kDa. This band was successfully blocked by incubation with the immunising peptide. We would appreciate any feedback from people in the field - have any results been reported with other antibodies/lysates Have any further splice variants/modified forms been reported
<b>Protein Sequence</b>	HKARKLARLTKEE
<b>Clonality</b>	Polyclonal
<b>MW</b>	58.8
<b>Entrez</b>	<b>4129</b>
<b>Dilution Range</b>	ELISA: 1:32000, WB: 0.1-0.3 µg/ml, IHC-P: 10ug/ml
<b>Expiration Date</b>	12 months from date of receipt.



Western blot analysis of Human Brain (Hi...)



Line graph illustrates about the Ag-Ab r...