

Product Datasheet

PCK1 antibody (orb19167)

Description

Goat polyclonal antibody to PCK1

Species/Host

Goat

Reactivity

Bovine, Canine, Human, Mouse, Porcine, Rat

Conjugation

Unconjugated

Tested

ELISA, IHC

Applications

PCK1 / PEPCKC (internal)

Preservatives

Supplied at 0.5 mg/ml in Tris saline, 0.02% sodium azide, pH 7.3 with 0.5% bovine serum albumin. Aliquot and store at -20°C. Minimize freezing and thawing.

Storage

Aliquot and store at -20°C. Minimize freezing and thawing.

Note

For research use only

Application notes

ELISA: Peptide ELISA: antibody detection limit dilution 1:8000.IHC: In paraffin embedded Human Cerebral Cortex shows staining of cytoplasm in pyramidal cells. Recommended concentration, 2-4ug/ml.WB: Preliminary experiments gave bands at approx 70kDa, 45kDa and 28kDa in Human Adipose, Kidney and Liver lysates after 0.3 µg/ml antibody staining. Please note that currently we cannot find an explanation in the literature for the additional bands we observe given the calculated size of 69.2 kDa according to NP_002582.2. All three detected bands were successfully blocked by incubation with the immunizing peptide (and BLAST results with the immunizing peptide sequence did not identify any other proteins to explain the additional bands). We would appreciate any feedback from people in the field - have any results been reported with other antibodies/lysates Have any further splice variants/modified forms been reported

Protein Sequence

HVNWFRKDKEGK

Clonality

Polyclonal

MW

69.2

Entrez

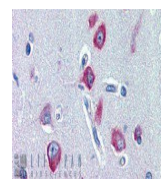
5105

Dilution Range

ELISA: 1:8000, WB: 0.3 µg/ml, IHC-P: 2 µg/ml

Expiration Date

12 months from date of receipt.



orb19167
(2ug/ml)
staining of
paraffin e...