

## Product Datasheet

### ERBB3 antibody (orb19129)

## Description

Goat polyclonal antibody to ERBB3

## Species/Host

Goat

## Reactivity

Bovine, Canine, Human, Mouse, Porcine, Rat

## Conjugation

Unconjugated

## Tested

ELISA, FC, IF, IHC

## Applications

## Target

ERBB3 / HER3

## Preservatives

Supplied at 0.5 mg/ml in Tris saline, 0.02% sodium azide, pH 7.3 with 0.5% bovine serum albumin. Aliquot and store at -20°C. Minimize freezing and thawing.

## Storage

Aliquot and store at -20°C. Minimize freezing and thawing.

## Note

For research use only

## Application notes

ELISA: Peptide ELISA: antibody detection limit dilution 1:32000. WB: Approx 150kDa band observed in human lysates of T cell line JURKAT (calculated MW of 148kDa according to NP\_001973.2). Recommended concentration: 0.1-0.3 µg/ml. A minor band of unknown identity was also consistently observed at 48kDa. This band was successfully blocked by incubation with the immunising peptide. We would appreciate any feedback from people in the field - have any results been reported with other antibodies/lysates Have any further splice variants/modified forms been reported

## Protein Sequence

HSRLFPKANAQRT

## Clonality

Polyclonal

## MW

148;

## Entrez

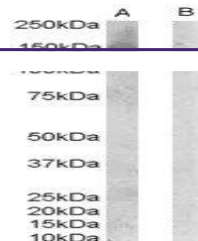
2065

## Dilution Range

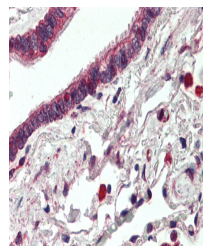
ELISA: 1:32000, IHC-P: 5 µg/ml

## Expiration Date

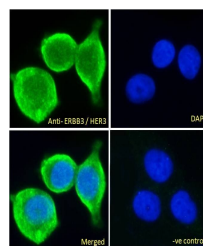
12 months from date of receipt.



orb19129 (0.1ug/ml)  
staining of Jurkat l...



orb19129 (5µg/ml)  
staining of paraffin



Immunofluorescence  
analysis of HeLa  
cell...