

Product Datasheet

VPS41 antibody (orb19098)

Description

Goat polyclonal antibody to VPS41

Species/Host

Goat

Reactivity

Bovine, Canine, Human, Mouse, Rat

Conjugation

Unconjugated

Tested

ELISA, IHC

Applications
Target

VPS41

Preservatives

Supplied at 0.5 mg/ml in Tris saline, 0.02% sodium azide, pH 7.3 with 0.5% bovine serum albumin. Aliquot and store at -20°C. Minimize freezing and thawing.

Storage

Aliquot and store at -20°C. Minimize freezing and thawing.

Note

For research use only

Application notes

ELISA: Peptide ELISA: antibody detection limit dilution 1:16000. WB: Preliminary experiments gave bands at approx 48kDa and 28kDa in human duodenum, kidney and placenta lysates after 1 µg/ml antibody staining. Please note that currently we cannot find an explanation in the literature for the bands we observe given the calculated size of 98.5kDa according to NP_055211.1 and 100kDa according to NP_542198.1. Both detected bands were successfully blocked by incubation with the immunizing peptide (and BLAST results with the immunizing peptide sequence did not identify any other proteins to explain the additional bands). We would appreciate any feedback from people in the field - have any results been reported with other antibodies/lysates Have any further splice variants/modified forms been reported

Protein Sequence

DHLKKDSQNKTLK

Clonality

Polyclonal

MW

98.5; 95.9

Entrez

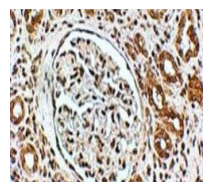
27072

Dilution Range

ELISA: 1:16000, WB: 1 µg/ml, IHC-P: 3.75 µg/ml

Expiration Date

12 months from date of receipt.



Immunohistochemical staining of Human Ki...