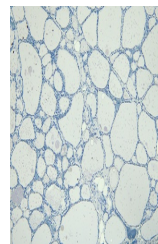


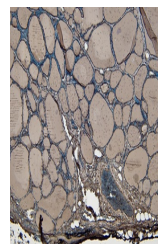
Product Datasheet

ENPP1 antibody (orb19086)

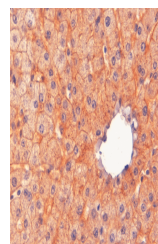
Description	Goat polyclonal antibody to ENPP1
Species/Host	Goat
Reactivity	Human, Mouse, Rat
Conjugation	Unconjugated
Tested Applications	ELISA, IHC
Target	ENPP1 / PC1
Preservatives	Supplied at 0.5 mg/ml in Tris saline, 0.02% sodium azide, pH 7.3 with 0.5% bovine serum albumin. Aliquot and store at -20°C. Minimize freezing and thawing.
Storage	Aliquot and store at -20°C. Minimize freezing and thawing.
Note	For research use only
Application notes	ELISA: Peptide ELISA: antibody detection limit dilution 1:32000.IHC: In paraffin embedded Liver shows membranous staining in many hepatocytes. This antibody has also been successfully used on Human Pancreas showing membranous staining of acinar cells. Recommended concentration, 1-2ug/ml.WB: In transfected HEK293 transiently expressing ENPP1 a band of approx. 100 kDa is observed. This band is not observed in the non-transfected HEK293. The calculated molecular size is 105kDa according to NP_006199.2. Recommended concentration, 1-3 µg/ml.
Protein Sequence	KTHLPTFSQED
Clonality	Polyclonal
MW	105
Entrez	5167
Dilution Range	ELISA: 1:32000, IHC-P: 8 µg/ml
Expiration Date	12 months from date of receipt.



orb19086
Negative
Control
showing
staini...



orb19086
(4µg/ml)
staining of
paraffin ...



orb19086
(2µg/ml)
staining of
paraffin ...