

## Product Datasheet

### HRH1 antibody (orb19079)

**Description**

Goat polyclonal antibody to HRH1

**Species/Host**

Goat

**Reactivity**

Bovine, Canine, Human, Mouse, Rat

**Conjugation**

Unconjugated

**Tested**

ELISA, FC, IF, IHC

**Applications**
**Target**

Histamine Receptor H1 (C Term)

**Preservatives**

Supplied at 0.5 mg/ml in Tris saline, 0.02% sodium azide, pH 7.3 with 0.5% bovine serum albumin. Aliquot and store at -20°C. Minimize freezing and thawing.

**Storage**

Aliquot and store at -20°C. Minimize freezing and thawing.

**Note**

For research use only

**Application notes**

ELISA: Peptide ELISA: antibody detection limit dilution 1:32000. WB: Preliminary experiments gave bands at approx 55kDa and 37kDa in Human Duodenum lysate after 0.3 µg/ml antibody staining. Please note that currently we cannot find an explanation in the literature for the 37kDa band we observe given the calculated size of 55.8kDa according to NP\_000852.1. Both detected bands were successfully blocked by incubation with the immunizing peptide (and BLAST results with the immunizing peptide sequence did not identify any other proteins to explain the additional band). We would appreciate any feedback from people in the field - have any results been reported with other antibodies/lysates Have any further splice variants/modified forms been reported

**Protein Sequence**

CNENFKKTFKRILH

**Clonality**

Polyclonal

**MW**

55.8

**Entrez**

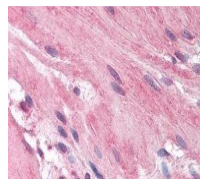
3269

**Dilution Range**

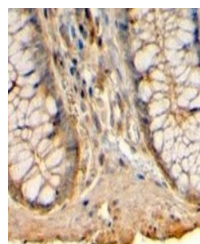
ELISA: 1:32000, WB: 0.3 µg/ml, IHC-P: 5 µg/ml

**Expiration Date**

12 months from date of receipt.



Immunohistochemical staining of Human Sm...



Immunohistochemical staining of Human Co...