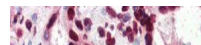


Product Datasheet

HMGA1 antibody (orb19076)

Description

Goat polyclonal antibody to HMGA1


Species/Host

Goat

Reactivity

Bovine, Canine, Human, Mouse, Porcine, Rat

Conjugation

Unconjugated

Tested

ELISA, IHC

Applications

Immunohistochemical
staining of Human
Pl...

Target

HMGA1

Preservatives

Supplied at 0.5 mg/ml in Tris saline, 0.02% sodium azide, pH 7.3 with 0.5% bovine serum albumin. Aliquot and store at -20°C. Minimize freezing and thawing.

Storage

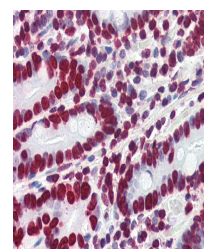
Aliquot and store at -20°C. Minimize freezing and thawing.

Note

For research use only

Application notes

ELISA: Peptide ELISA: antibody detection limit dilution 1:32000. IHC: In paraffin embedded Human Placenta shows strong nuclear staining. Recommended concentration, 4-6ug/ml. WB: Preliminary experiments gave an approx 50kDa band in Human Testis and Ovary lysates after 0.3 µg/ml antibody staining. Please note that currently we cannot find an explanation in the literature for the band we observe given the calculated size of 11.7kDa according to isoform a (also called HMG-I; NP_665906.1; NP_665908.1; NP_665911.1) and 10.7kDa according to isoform b (also called HMG-Y; NP_002122.1; NP_665909.1; NP_665910.1; NP_665912.1). The 50kDa band was successfully blocked by incubation with the immunizing peptide. We would appreciate any feedback from people in the field - have any results been reported with other antibodies/lysates Have any further splice variants/modified forms been reported


Immunohistochemical
staining of Human
Sm...

Protein Sequence

LASKQEKDGTKEK

Clonality

Polyclonal

MW

11.7; 10.7

Entrez
[3159](#)
Dilution Range

ELISA: 1:32000, WB: 0.3 µg/ml, IHC-P: 4 µg/ml

Expiration Date

12 months from date of receipt.