

Product Datasheet

CYBRD1 antibody (orb18972)

Description

Goat polyclonal antibody to CYBRD1

Species/Host

Goat

Reactivity

Bovine, Canine, Human, Porcine

Conjugation

Unconjugated

Tested

ELISA, IHC, WB

Applications

Target

Cytochrome b reductase 1

Preservatives

Supplied at 0.5 mg/ml in Tris saline, 0.02% sodium azide, pH 7.3 with 0.5% bovine serum albumin. Aliquot and store at -20°C. Minimize freezing and thawing.

Storage

Aliquot and store at -20°C. Minimize freezing and thawing.

Note

For research use only

Application notes

ELISA: Peptide ELISA: antibody detection limit dilution 1:16000.WB: Experiments gave bands at approx 35kDa and a 26+28kDa doublet in human colon lysate after 0.1 µg/ml antibody staining. Please note that currently we cannot find an explanation in the literature for the bands we observe given the calculated size of 31.6kDa according to NP_079119. The detected bands were all successfully blocked by incubation with the immunizing peptide (and BLAST results with the immunizing peptide sequence did not identify any other proteins to explain the additional bands). We would appreciate any feedback from people in the field - have any results been reported with other antibodies/lysates Have any further splice variants/modified forms been reported

Protein Sequence

CRNLALDEAGQRSTM

Clonality

Polyclonal

MW

31.6

Entrez

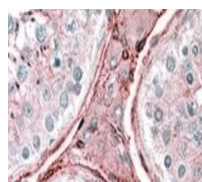
79901

Dilution Range

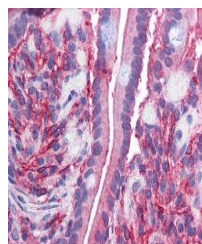
ELISA: 1:16000, WB: 0.1 µg/ml, IHC-P: 2.5ug/ml

Expiration Date

12 months from date of receipt.



Immunohistochemical staining of Human Testis



Immunohistochemical staining of Human Small Intestine