

Product Datasheet

SEMA3E antibody (orb18970)

Description

Goat polyclonal antibody to SEMA3E

Species/Host

Goat

Reactivity

Human

Conjugation

Unconjugated

Tested

ELISA, IHC

Applications

Target

SEMA3E

Preservatives

Supplied at 0.5 mg/ml in Tris saline, 0.02% sodium azide, pH 7.3 with 0.5% bovine serum albumin. Aliquot and store at -20°C. Minimize freezing and thawing.

Storage

Aliquot and store at -20°C. Minimize freezing and thawing.

Note

For research use only

Application notes

ELISA: Peptide ELISA: antibody detection limit dilution 1:64000.IHC: In paraffin embedded Human Adrenal Medulla shows granular cytoplasmic staining increasing towards the zona reticularis. Recommended concentration, 2-4ug/ml.WB: Preliminary experiments gave bands at approx 35kDa and 20kDa in Human Prostate lysates after 0.1 µg/ml antibody staining. Please note that currently we cannot find an explanation in the literature for the bands we observe given the calculated size of 89.2kDa according to NP_036563.1. Both detected bands were successfully blocked by incubation with the immunizing peptide (and BLAST results with the immunizing peptide sequence did not identify any other proteins to explain the additional bands). We would appreciate any feedback from people in the field - have any results been reported with other antibodies/lysates Have any further splice variants/modified forms been reported

Protein Sequence

KPEHYRLPRHTLDS

Clonality

Polyclonal

MW

89.2

Entrez

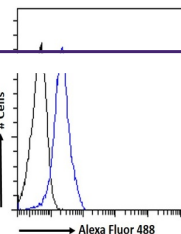
[9723](#)

Dilution Range

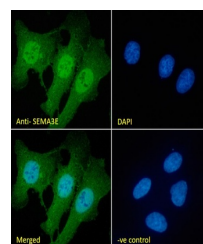
ELISA: 1:64000, WB: 0.1 µg/ml, IHC-P: 2-4µg/ml

Expiration Date

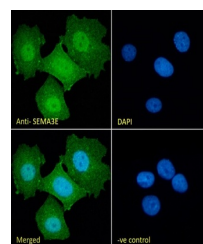
12 months from date of receipt.



orb18970 Flow cytometric analysis of par...



orb18970 Immunofluorescence analysis of ...



orb18970 Immunofluorescence analysis of ...