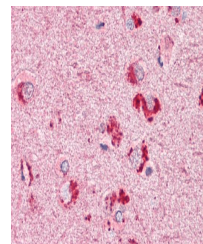


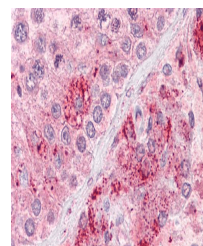
## Product Datasheet

### RIF1 antibody (orb18941)

<b>Description</b>	Goat polyclonal antibody to RIF1
<b>Species/Host</b>	Goat
<b>Reactivity</b>	Human
<b>Conjugation</b>	Unconjugated
<b>Tested Applications</b>	ELISA, IHC
<b>Target</b>	RIF1 (aa 2076-2089)
<b>Preservatives</b>	Supplied at 0.5 mg/ml in Tris saline, 0.02% sodium azide, pH 7.3 with 0.5% bovine serum albumin. Aliquot and store at -20°C. Minimize freezing and thawing.
<b>Storage</b>	Aliquot and store at -20°C. Minimize freezing and thawing.
<b>Note</b>	For research use only
<b>Application notes</b>	ELISA: Peptide ELISA: antibody detection limit dilution 1:16000.WB: Not yet tested - our routinely used western blotting protocol does not allow detection of proteins as large as the predicted size of approx. 247kDa according to NP_060621. Therefore we cannot recommend an optimal concentration and the product is investigative grade. We would appreciate any feedback from people in the field - have any results been reported with other antibodies/lysates Have any further splice variants/modified forms been reported
<b>Protein Sequence</b>	CEEGIIDANKTETNT
<b>Clonality</b>	Polyclonal
<b>MW</b>	274
<b>Entrez</b>	<b>55183</b>
<b>Dilution Range</b>	ELISA: 1:16000, IHC-P: 1-2 µg/ml
<b>Expiration Date</b>	12 months from date of receipt.



Immunohistochemical staining of Human Co...



Immunohistochemical staining of Human Te...