

Product Datasheet

Sorbitol Dehydrogenase antibody (orb18924)

Description

Goat polyclonal to Sorbitol Dehydrogenase

Species/Host

Goat

Reactivity

Canine, Human, Mouse, Rat

Conjugation

Unconjugated

Tested

ELISA, WB

Applications

Target

Sorbitol Dehydrogenase

Preservatives

Supplied at 0.5 mg/ml in Tris saline, 0.02% sodium azide, pH 7.3 with 0.5% bovine serum albumin. Aliquot and store at -20°C. Minimize freezing and thawing.

Storage

Aliquot and store at -20°C. Minimize freezing and thawing.

Note

For research use only

Application notes

ELISA: Peptide ELISA: antibody detection limit dilution 1:16000. WB: Peptide ELISA: antibody detection limit dilution 1:16,000. Western Blot: Approx 38kDa band observed in Mouse Kidney lysates (calculated MW of 38.3kDa according to NP_003095.1). Recommended concentration: 0.1-0.3 µg/ml. A minor band of unknown identity was also consistently observed at 48kDa. This band was successfully blocked by incubation with the immunising peptide. We would appreciate any feedback from people in the field - have any results been reported with other antibodies/lysates Have any further splice variants/modified forms been reported

Protein Sequence

KIMLKCDPSDQNP

Clonality

Polyclonal

MW

38.3

Entrez

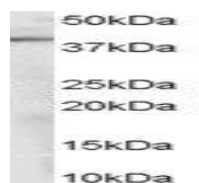
[6652](#)

Dilution Range

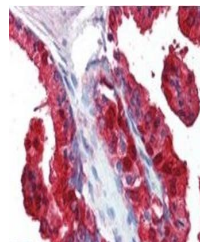
ELISA: 1:16000, WB: 0.1-0.3 µg/ml

Expiration Date

12 months from date of receipt.

Western blot analysis
of Mouse Kidney ly...



Immunohistochemical
staining of Human
Pr...