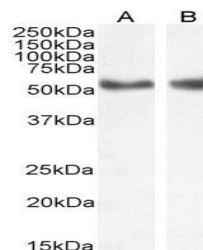


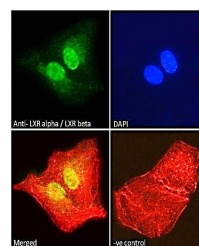
Product Datasheet

NR1H3; NR1H2 antibody (orb18917)

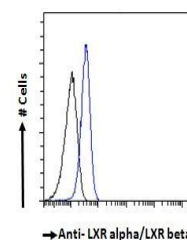
Description	Goat polyclonal antibody to NR1H3; NR1H2
Species/Host	Goat
Reactivity	Bovine, Canine, Human, Mouse, Rat
Conjugation	Unconjugated
Tested Applications	ELISA, FC, IF, WB
Target	LXR alpha / LXR beta
Preservatives	Supplied at 0.5 mg/ml in Tris saline, 0.02% sodium azide, pH 7.3 with 0.5% bovine serum albumin. Aliquot and store at -20°C. Minimize freezing and thawing.
Storage	Aliquot and store at -20°C. Minimize freezing and thawing.
Note	For research use only
Application notes	ELISA: Peptide ELISA: antibody detection limit dilution 1:32000.WB: Approx 55kDa band observed in human spleen lysates (calculated MW of 50.5kDa according to NP_005684 and 50.1kDa according to NP_009052). Recommended concentration: 1-3 µg/ml. Additional minor bands were also consistently observed at 38kDa and 75kDa. These bands were successfully blocked by incubation with the immunising peptide.
Protein Sequence	CRLQDKKLPLLSEI
Clonality	Polyclonal
MW	50.5; 50.1; 43.6; 51.1; 38.9
Entrez	10062, 7376
Dilution Range	ELISA: 1:32000, WB: 1-3 µg/ml, IHC-P: 10ug/ml
Expiration Date	12 months from date of receipt.



Western blot analysis of Human Liver (la...)



Immunofluorescence analysis of A549 cell...



Flow Cytometry analysis of A549 cells of...