

Product Datasheet

LRP6 antibody (orb18907)

Description

Goat polyclonal antibody to LRP6

Species/Host

Goat

Reactivity

Canine, Human, Mouse, Rat

Conjugation

Unconjugated

Tested

ELISA, FC, IHC

Applications

Target

LRP6

Preservatives

Supplied at 0.5 mg/ml in Tris saline, 0.02% sodium azide, pH 7.3 with 0.5% bovine serum albumin. Aliquot and store at -20°C. Minimize freezing and thawing.

Storage

Aliquot and store at -20°C. Minimize freezing and thawing.

Note

For research use only

Application notes

ELISA: Peptide ELISA: antibody detection limit dilution 1:64000.IHC: In paraffin embedded Human Kidney shows luminal membrane staining in DCT. Recommended concentration, 4-6ug/ml.WB: Preliminary experiments gave bands at approx 50kDa and 35kDa in Human Adipose lysates after 0.1 µg/ml antibody staining. Please note that currently we cannot find an explanation in the literature for the bands we observe given the calculated size of 180kDa according to NP_002327.2. Both detected bands were successfully blocked by incubation with the immunizing peptide (and BLAST results with the immunizing peptide sequence did not identify any other proteins to explain the additional bands). We would appreciate any feedback from people in the field - have any results been reported with other antibodies/lysates Have any further splice variants/modified forms been reported

Protein Sequence

CMTSVATAKGYTSDL

Clonality

Polyclonal

MW

180

Entrez

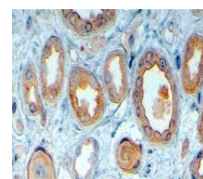
[4040](#)

Dilution Range

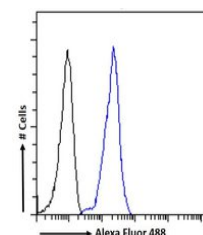
ELISA: 1:64000, WB: 0.1 µg/ml, IHC-P: 4-6 µg/ml

Expiration Date

12 months from date of receipt.



Immunohistochemical staining of Human Kidney tissue showing luminal membrane staining in DCT.



Flow cytometric analysis of paraformaldehyde-fixed cells.