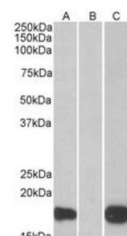


Product Datasheet

PHLDA3 antibody (orb18884)

Description	Goat polyclonal antibody to PHLDA3
Species/Host	Goat
Reactivity	Human, Mouse, Rat
Conjugation	Unconjugated
Tested Applications	ELISA, WB
Target	PHLDA3 / TIH1
Preservatives	Supplied at 0.5 mg/ml in Tris saline, 0.02% sodium azide, pH 7.3 with 0.5% bovine serum albumin. Aliquot and store at -20°C. Minimize freezing and thawing.
Storage	Aliquot and store at -20°C. Minimize freezing and thawing.
Note	For research use only
Application notes	ELISA: Peptide ELISA: antibody detection limit dilution 1:16000.WB: Preliminary experiments gave an approx 70kDa band in Human Placenta lysate after 1 µg/ml antibody staining. This band was successfully blocked by the immunizing peptide. Please note that currently we cannot find an explanation in the literature for the band we observe given the calculated size of 13.9kDa according to NP_036528. We would appreciate any feedback from people in the field - have any results been reported with other antibodies/lysates Have any further splice variants/modified forms been reported
Protein Sequence	RARQSLGTGTLVS
Clonality	Polyclonal
MW	13.9
Entrez	23612
Dilution Range	ELISA: 1:16000, WB: 0.2-1 µg/ml
Expiration Date	12 months from date of receipt.



Western blot analysis of HEK293 lysate u...