

## Product Datasheet

### BAZ2B antibody (orb18883)

**Description**

Goat polyclonal antibody to BAZ2B

**Species/Host**

Goat

**Reactivity**

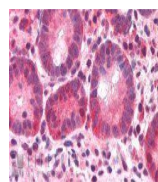
Bovine, Human, Mouse, Rat

**Conjugation**

Unconjugated

**Tested**

ELISA, IHC

**Applications**


orb18883  
(5ug/ml)  
staining of  
paraffin e...

**Target**

BAZ2B

**Preservatives**

Supplied at 0.5 mg/ml in Tris saline, 0.02% sodium azide, pH 7.3 with 0.5% bovine serum albumin. Aliquot and store at -20°C. Minimize freezing and thawing.

**Storage**

Aliquot and store at -20°C. Minimize freezing and thawing.

**Note**

For research use only

**Application notes**

ELISA: Peptide ELISA: antibody detection limit dilution 1:4000.IHC: In paraffin embedded Human Small Intestine shows primarily nuclear staining in a number of cells of the lamina propria. Recommended concentration, 1-2ug/ml.WB: Preliminary experiments gave an approx 35kDa band in Testis and Brain lysates after 0.3 µg/ml antibody staining. Please note that currently we cannot find an explanation in the literature for the band we observe given the calculated size of 221kDa according to NP\_038478. The 35kDa band was successfully blocked by incubation with the immunizing peptide. We would appreciate any feedback from people in the field - have any results been reported with other antibodies/lysates Have any further splice variants/modified forms been reported

**Protein Sequence**

YFEKKWTDTFKVS

**Clonality**

Polyclonal

**MW**

240

**Entrez**

29994

**Dilution Range**

ELISA: 1:4000, WB: 0.3 µg/ml, IHC-P: 1-2µg/ml

**Expiration Date**

12 months from date of receipt.