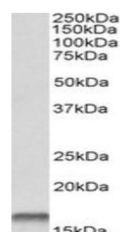


## Product Datasheet

### CSTB antibody (orb18776)

<b>Description</b>	Goat polyclonal antibody to CSTB
<b>Species/Host</b>	Goat
<b>Reactivity</b>	Human
<b>Conjugation</b>	Unconjugated
<b>Tested Applications</b>	ELISA, IHC, WB
<b>Target</b>	Cystatin B / Stefin B
<b>Preservatives</b>	Supplied at 0.5 mg/ml in Tris saline, 0.02% sodium azide, pH 7.3 with 0.5% bovine serum albumin. Aliquot and store at -20°C. Minimize freezing and thawing.
<b>Storage</b>	Aliquot and store at -20°C. Minimize freezing and thawing.
<b>Note</b>	For research use only
<b>Application notes</b>	ELISA: Peptide ELISA: antibody detection limit dilution 1:32000.WB: Preliminary experiments gave no signal but low background in human brain lysates at up to 1 µg/ml. However this used our routine western blotting protocol which we would not expect to reliably detect proteins as small as the predicted size of approx. 11kDa according to NP_000091. We would appreciate any feedback from people in the field - have any results been reported with other antibodies/lysates
<b>Protein Sequence</b>	QTNKAKHDELTYP
<b>Clonality</b>	Polyclonal
<b>MW</b>	11.1
<b>Entrez</b>	<b>1476</b>
<b>Dilution Range</b>	ELISA: 1:32000, WB: 0.1-0.3 µg/ml
<b>Expiration Date</b>	12 months from date of receipt.



Western blot analysis of Human Lungs using...