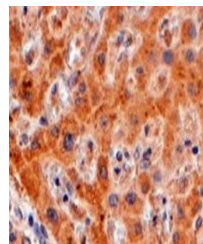


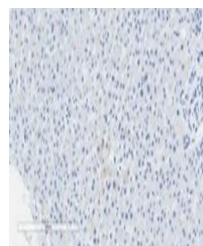
Product Datasheet

FENS1 antibody (orb18694)

Description	Goat polyclonal to FENS1
Species/Host	Goat
Reactivity	Human, Mouse, Rat
Conjugation	Unconjugated
Tested Applications	ELISA
Target	FENS1 / WDFY1
Preservatives	Supplied at 0.5 mg/ml in Tris saline, 0.02% sodium azide, pH 7.3 with 0.5% bovine serum albumin. Aliquot and store at -20°C. Minimize freezing and thawing.
Storage	Aliquot and store at -20°C. Minimize freezing and thawing.
Note	For research use only
Application notes	This antibody is expected to recognise both reported isoforms (as represented by NP_065881 and NP_848127)ELISA: Peptide ELISA: antibody detection limit dilution 1:32000.WB: Preliminary experiments gave no signal but low background in Human Liver and HepG2 lysates at up to 1 µg/ml. We would appreciate any feedback from people in the field - have any results been reported with other antibodies/lysates
Protein Sequence	VVGCSLATGFSPH
Clonality	Polyclonal
MW	46.3
Entrez	57590
Dilution Range	ELISA: 1:128000, WB: 1 µg/ml
Expiration Date	12 months from date of receipt.



Immunohistochemical staining of Human Liver



Immunohistochemical staining of Human Liver