

Product Datasheet

Bag1 Antibody (orb18615)

Description
Bag1 Antibody
Species/Host

Rabbit

Reactivity

Human, Mouse, Rat

Conjugation

Unconjugated

Tested

IHC, WB

Applications
Immunogen

A synthetic peptide corresponding to a sequence at the C-terminus of human Bag1 (323-345aa DTVEQNICQETERLQSTNFALAE), different from the related mouse sequence by two amino acids, and from the related rat sequence by three amino acids.

Form/Appearance

Lyophilized

Concentration

Adding 0.2 ml of distilled water will yield a concentration of 500 µg/ml.

Storage

Store at -20°C for one year from date of receipt. After reconstitution, at 4°C for one month. It can also be aliquotted and stored frozen at -20°C for six months. Avoid repeated freeze-thaw cycles.

Note

For research use only

Application notes

Tested Species: In-house tested species with positive results. Predicted Species: Species predicted to be fit for the product based on sequence similarities. By Heat: Boiling the paraffin sections in 10mM citrate buffer, pH6.0, for 20mins is required for the staining of formalin/paraffin sections. Other applications have not been tested. Optimal dilutions should be determined by end users. . Add 0.2ml of distilled water will yield a concentration of 500ug/ml.

Isotype

Rabbit IgG

Clonality

Polyclonal

MW

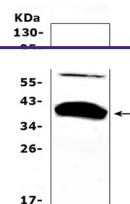
38779 MW

Uniprot ID
Q99933
Dilution Range

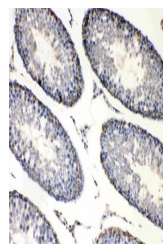
Western blot, 0.1-0.5µg/ml, Human Immunohistochemistry (Paraffin-embedded Section), 2-5µg/ml, Human, Mouse, Rat, By Heat

Expiration Date

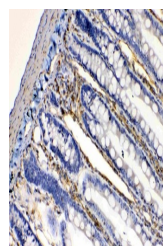
12 months from date of receipt.



WB analysis of Bag1 using anti-Bag1 anti...



IHC analysis of Bag1 using anti-Bag1 ant...



IHC analysis of Bag1 using anti-Bag1 ant...