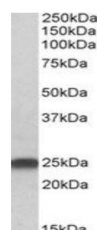


Product Datasheet

LIN7B antibody (orb18611)

Description	Goat polyclonal to LIN7B
Species/Host	Goat
Reactivity	Bovine, Canine, Human, Mouse, Porcine, Rat
Conjugation	Unconjugated
Tested Applications	ELISA, WB
Target	LIN7B / MALS-2
Preservatives	Supplied at 0.5 mg/ml in Tris saline, 0.02% sodium azide, pH 7.3 with 0.5% bovine serum albumin. Aliquot and store at -20°C. Minimize freezing and thawing.
Storage	Aliquot and store at -20°C. Minimize freezing and thawing.
Note	For research use only
Application notes	ELISA: Peptide ELISA: antibody detection limit dilution 1:32000.WB: Preliminary experiments gave an approx 25kDa band in Mouse Brain ysates at 0.2 µg/ml (close to the predicted MW of 24kDa according to NP_071448). However in human we found a band at 60kDa and none at 25kDa. Please note that currently we cannot find an explanation in the literature for the human band. We would appreciate any feedback from people in the field - have any results been reported with other antibodies/lysates Have any further splice variants/modified forms been reported
Protein Sequence	AALVEPLGLERDVS
Clonality	Polyclonal
MW	22.9
Entrez	64130
Dilution Range	ELISA: 1:32000, WB: 0.5-2 µg/ml
Expiration Date	12 months from date of receipt.



Western blot analysis of Rat Brain lysat...