

Product Datasheet

OSBPL9 antibody (orb18609)

Description

Goat polyclonal antibody to OSBPL9

Species/Host

Goat

Reactivity

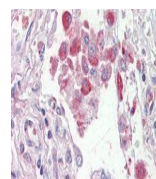
Bovine, Canine, Human, Mouse, Porcine, Rat

Conjugation

Unconjugated

Tested

ELISA, IHC

Applications


orb18609
(2.5ug/ml)
staining of
paraffin...

Target

ORP9 / OSBPL9

Preservatives

Supplied at 0.5 mg/ml in Tris saline, 0.02% sodium azide, pH 7.3 with 0.5% bovine serum albumin. Aliquot and store at -20°C. Minimize freezing and thawing.

Storage

Aliquot and store at -20°C. Minimize freezing and thawing.

Note

For research use only

Application notes

ELISA: Peptide ELISA: antibody detection limit dilution 1:32000.IHC: In paraffin embedded Human Lung shows staining of alveolar macrophages. . Recommended concentration, 2-4ug/ml.WB: Preliminary experiments gave bands at approx 150kDa and 19kDa in lysates of Human Brain, and Testis and 55kDa in lysates of Human Placenta and Testes after 0.5 µg/ml antibody staining. Please note that currently we cannot find an explanation in the literature for the bands we observe given the different calculated sizes of the six reported isoforms (a: 62.5kDa for NP_683702.1 and NP_683703.1; b: 63.9kDa for NP_683704.1; c: 70.2kDa for NP_683705.1; d: 81.8kDa for NP_683706.1; e: 83.2 kDa for NP_078862.2; f: 84.3kDa for NP_683707.1). All detected bands were successfully blocked by incubation with the immunizing peptide (and BLAST results with the immunizing peptide sequence did not identify any other proteins to explain the additional bands). We would appreciate any feedback from people in the field - have any results been reported with other antibodies/lysates Have any further splice variants/modified forms been reported

Protein Sequence

EPLLKRLGAAKH

Clonality

Polyclonal

MW

83.2; 62.5; 81.2; 70.2; 81.8; 84.3

Entrez
[114883](#)
Dilution Range

ELISA: 1:32000, WB: 0.5 µg/ml, IHC-P: 2-4µg/ml

Expiration Date

12 months from date of receipt.