

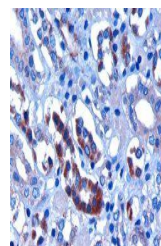
Product Datasheet

FBXW2 antibody (orb18575)

Description	Goat polyclonal antibody to FBXW2
Species/Host	Goat
Reactivity	Bovine, Canine, Human, Mouse, Porcine, Rat
Conjugation	Unconjugated
Tested Applications	ELISA, IHC, WB
Target	FBXW2
Preservatives	Supplied at 0.5 mg/ml in Tris saline, 0.02% sodium azide, pH 7.3 with 0.5% bovine serum albumin. Aliquot and store at -20°C. Minimize freezing and thawing.
Storage	Aliquot and store at -20°C. Minimize freezing and thawing.
Note	For research use only
Application notes	ELISA: Peptide ELISA: antibody detection limit dilution 1:128000.IHC: In paraffin embedded Human Kidney, shows cytoplasmic staining of epithelial cells in some renal tubules. Recommended concentration, 2-3ug/ml.WB: Approx 48kDa band observed in Human Kidney lysates (calculated MW of 48.0kDa according to NP_036296.1). Recommended concentration: 0.3-1.5 µg/ml. A stronger band of unknown identity was also consistently observed at appr. 30kDa - both bands were successfully blocked by incubation with the immunising peptide.
Protein Sequence	KRGSSFLAGEHPG
Clonality	Polyclonal
MW	51.5
Entrez	26190
Dilution Range	ELISA: 1:128000, WB: 0.3-1.5 µg/ml, IHC-P: 2-3µg/ml
Expiration Date	12 months from date of receipt.



orb18575 staining (0.3ug/ml) of Human Ki...



orb18575 (3ug/ml) staining of paraffin e...