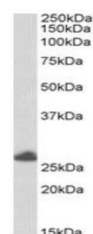


## Product Datasheet

### RNF35 antibody (orb18488)

<b>Description</b>	Goat polyclonal to RNF35
<b>Species/Host</b>	Goat
<b>Reactivity</b>	Human
<b>Conjugation</b>	Unconjugated
<b>Tested Applications</b>	ELISA, WB
<b>Target</b>	RNF35 / TRIM40
<b>Preservatives</b>	Supplied at 0.5 mg/ml in Tris saline, 0.02% sodium azide, pH 7.3 with 0.5% bovine serum albumin. Aliquot and store at -20°C. Minimize freezing and thawing.
<b>Storage</b>	Aliquot and store at -20°C. Minimize freezing and thawing.
<b>Note</b>	For research use only
<b>Application notes</b>	ELISA: Peptide ELISA: antibody detection limit dilution 1:32000.WB: Approx. 45kDa band observed in Human Brain lysates at 0.5-1ug of primary, this band was successfully blocked by incubation with the immunising peptide. Please note that the band we observe is different from the predicted size of approx. 26kDa according to NP_619645. Currently we cannot find an explanation for this in the literature. We would appreciate any feedback from people in the field - have any results been reported with other antibodies/lysates Have any splice variants/modified forms been reported
<b>Protein Sequence</b>	GVSELLLQPPQKL
<b>Clonality</b>	Polyclonal
<b>MW</b>	26.1
<b>Entrez</b>	<b>135644</b>
<b>Dilution Range</b>	ELISA: 1:32000, WB: 0.5-2 µg/ml
<b>Expiration Date</b>	12 months from date of receipt.



Western blot analysis of Human Placenta ...