

## Product Datasheet

### TRIM2 antibody (orb18436)

**Description**

Goat polyclonal antibody to TRIM2

**Species/Host**

Goat

**Reactivity**

Bovine, Canine, Human, Mouse, Rat

**Conjugation**

Unconjugated

**Tested**

ELISA, FC, IHC, WB

**Applications**
**Target**

TRIM2

**Preservatives**

Supplied at 0.5 mg/ml in Tris saline, 0.02% sodium azide, pH 7.3 with 0.5% bovine serum albumin. Aliquot and store at -20°C. Minimize freezing and thawing.

**Storage**

Aliquot and store at -20°C. Minimize freezing and thawing.

**Note**

For research use only

**Application notes**

ELISA: Peptide ELISA: antibody detection limit dilution 1:16000. WB: Approx 80+85kDa bands observed in Rat Brain lysates (calculated MW of 81.5kDa according to Human NP\_001123539.1, 84.4 according to Human NP\_056086.2 and 83.3 according to Rat NP\_001102022.1). Recommended concentration: 0.5-2 µg/ml. An additional band of unknown identity was also consistently observed at 30kDa. This band was successfully blocked by incubation with the immunizing peptide. We would appreciate any feedback from people in the field - have any such results been reported with other antibodies/lysates Have any further splice variants/modified forms been reported

**Protein Sequence**

DSGNHCFKVYRYLQ

**Clonality**

Polyclonal

**MW**

84.5; 81.5; 83.9; 83.6; 81.8; 67.7

**Entrez**

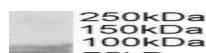
23321

**Dilution Range**

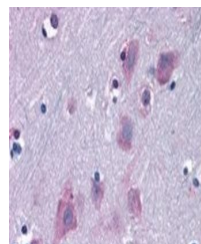
ELISA: 1:16000, WB: 0.5-1 µg/ml, IHC-P: 6-12 µg/ml

**Expiration Date**

12 months from date of receipt.




Western blot analysis  
of Rat Brain lysat...



Immunohistochemical  
staining of Human  
Co...