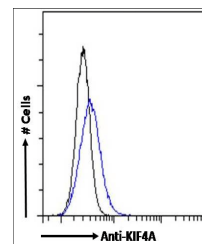


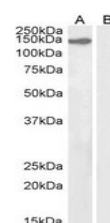
Product Datasheet

KIF4A antibody (orb18420)

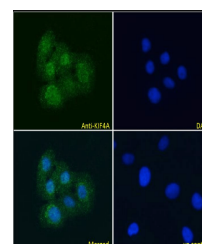
| | |
|----------------------------|--|
| Description | Goat polyclonal antibody to KIF4A |
| Species/Host | Goat |
| Reactivity | Bovine, Human, Mouse, Porcine, Rat |
| Conjugation | Unconjugated |
| Tested Applications | ELISA, FC, IF, WB |
| Target | KIF4A |
| Preservatives | Supplied at 0.5 mg/ml in Tris saline, 0.02% sodium azide, pH 7.3 with 0.5% bovine serum albumin. Aliquot and store at -20°C. Minimize freezing and thawing. |
| Storage | Aliquot and store at -20°C. Minimize freezing and thawing. |
| Note | For research use only |
| Application notes | ELISA: Peptide ELISA: antibody detection limit dilution 1:64000.WB: Preliminary experiments in lysates of cell line HeLa gave no specific signal but low background (at antibody concentration up to 1 µg/ml). We would appreciate any feedback from people in the field - have any results been reported with other antibodies/lysatesExperiment Notes: Immunofluorescence: This antibody has been successfully used in ICC/IF on HeLa (methanol-fixed, and BSA-blocked) by a customer. |
| Protein Sequence | SFFSGCSPIEEEAH |
| Clonality | Polyclonal |
| MW | 140 |
| Dilution Range | ELISA: 1:64000, WB: 1-2 µg/ml, IHC-P: 10ug/ml |
| Expiration Date | 12 months from date of receipt. |



Flow cytometric analysis of HEK293 cells...



Western blot analysis of NIH3T3(lane 1) ...



Immunofluorescence analysis of U2OS cell...