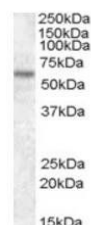


Product Datasheet

TFE3 antibody (orb18418)

Description	Goat polyclonal antibody to TFE3
Species/Host	Goat
Reactivity	Bovine, Canine, Human, Mouse
Conjugation	Unconjugated
Tested Applications	ELISA, WB
Target	TFE3
Preservatives	Supplied at 0.5 mg/ml in Tris saline, 0.02% sodium azide, pH 7.3 with 0.5% bovine serum albumin. Aliquot and store at -20°C. Minimize freezing and thawing.
Storage	Aliquot and store at -20°C. Minimize freezing and thawing.
Note	For research use only
Application notes	ELISA: Peptide ELISA: antibody detection limit dilution 1:16000.WB: Preliminary experiments gave 50 and 30kDa bands in Raji and Daudi cell lysates at 2ug of primary. Please note that currently we cannot find an explanation in the literature for the band we observe given the predicted size of approx. 63Kda according to NP_006512. We would appreciate any feedback from people in the field - have any results been reported with other antibodies/lysates Have any further splice variants/modified forms been reported
Protein Sequence	SHAAEPARDGVEAS
Clonality	Polyclonal
MW	61.5
Entrez	7030
Dilution Range	ELISA: 1:32000, WB: 1-3 µg/ml
Expiration Date	12 months from date of receipt.



Western blot analysis of HEK293 lysate u...